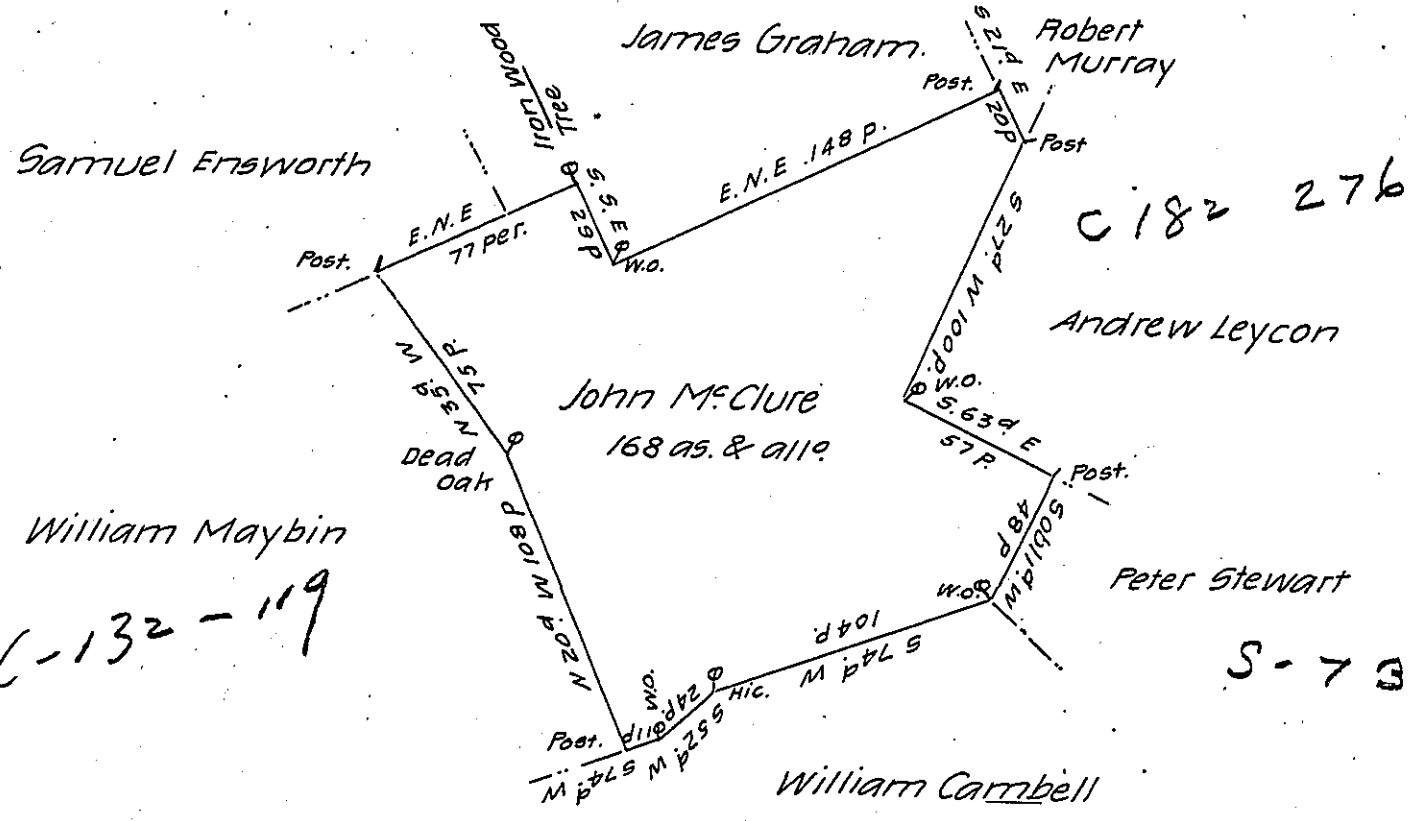


C-122-24772

082 8



By virtue of a Warrant dated March the 10th 1743 The above described Tract of Land was Surveyed for John McClure in Harrover Township in Lancaster County Beginning at a Hickery Corner of Wm Cambell thence South 52d W. by D<sup>o</sup> 24. ps to a W.O. thence S 74d W. Eleven ps. to a post &c<sup>9</sup> (March ye 4th 1745.)

Sam<sup>l</sup> Lightfoot

IN TESTIMONY that the above is a copy of the original remaining on file in the Department of Internal Affairs of Pennsylvania, made conformably to an Act of Assembly approved the 16th day of February, 1833, I have hereunto set my Hand and caused the Seal of said Department to be affixed at Harrisburg, this thirteenth day of January 1906

*Isaac B. Penning*  
Secretary of Internal Affairs.